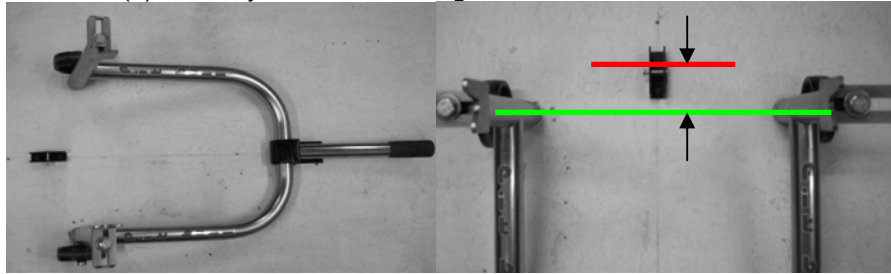




### **Step 3**

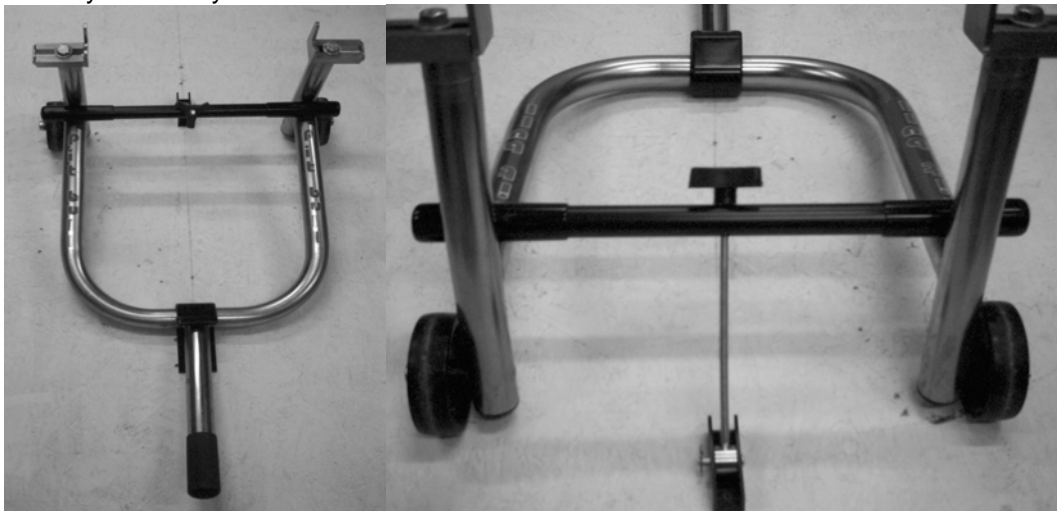
Offer the stand up to the surface again and fully engage it in the J bracket (1) you mounted in step 2. Using a pencil, mark a position on the center line that is between 1 & 1.5" farther away from the J bracket than an imaginary line drawn through the axis of the stand wheels. See picture. Then mount the wall anchor bracket(2) centrally on this line using 2 suitable fasteners.



**Step 3 Stand engaged in J Hook & Bracket Center line 1 - 1.5" forward**

### **Step 4**

Fit the extra grip (3) to the end of the draw bar (5) without a grip. Attach the threaded rod end (4) to the wall bracket using the clevis pin and R grip. Remove the speed nut, fit the draw bar to the threaded rod through the hole in the center of the draw bar. Then re-fit the threaded speed nut to the threaded rod to secure the draw bar in place. Speed nut need only be engaged 3 or 4 turns at this point. You are now ready to install your stand in the nice raxx.



### **Installing your stand in the Nice Raxx**

While holding the draw bar away from the mounting surface, hook the legs of the stand under the draw bar, then slide the stand up so that the stand engages the J bracket. Now push down on the draw bar so that it draws up against the stand. Hold the bar in place with one hand and with the other wind the speed nut down the threaded rod to meet the draw bar, such that it will apply a load to the stand to retain it in place. Moderate hand pressure is all that is required to hold the stand in place, do not use excessive force on the speed nut or damage to your stand or the mounting surface may result. Visit our website at [WWW.NiceRaxx.com](http://WWW.NiceRaxx.com) for more pictures and information on using the Nice Raxx.

BKP Products hereby warrants that at the time of delivery thereof the parts bought will be free from defects in material and workmanship and will conform to the requirements the order. BKP Products assumes no liability for faulty or improper installation or use. All claims under this warranty must be made in writing to BKP Products. Upon receipt of authorization from BKP Products, the parts claimed to defective or non conforming must be returned freight prepaid, to BKP Products. BKP Products will repair, or at its option, replace any defective or non conforming parts and will return the repaired part or its replacement without charge. The failure to give BKP Products written notice of any claim hereunder within the warranty period shall constitute a waiver of all claims hereunder. The foregoing states BKP Products's remedy for any breach of warranty and for any claim whether sounding in contract or tort, based upon any defect in BKP Products's parts. This warranty does not extend to the parts that have been altered or repaired nor does it extend to parts that have been subjected to misuse, neglect, accident, or improper installation. BKP Products shall not, in any event, be liable for any incidental or consequential damages nor for any other damages more than the purchase price for the part. By accepting and or installing this item you fully agree to the terms and conditions of the warranty.

THE FOREGOING WARRANTIES ARE EXCLUSIVE AND ARE IN LIEU OF ALL OTHER WARRANTIES, WRITTEN, ORAL, OR IMPLIED, INCLUDING WARRANTY OF MERCHANTABILITY OR FITNESS FOR A PARTICULAR PURPOSE.